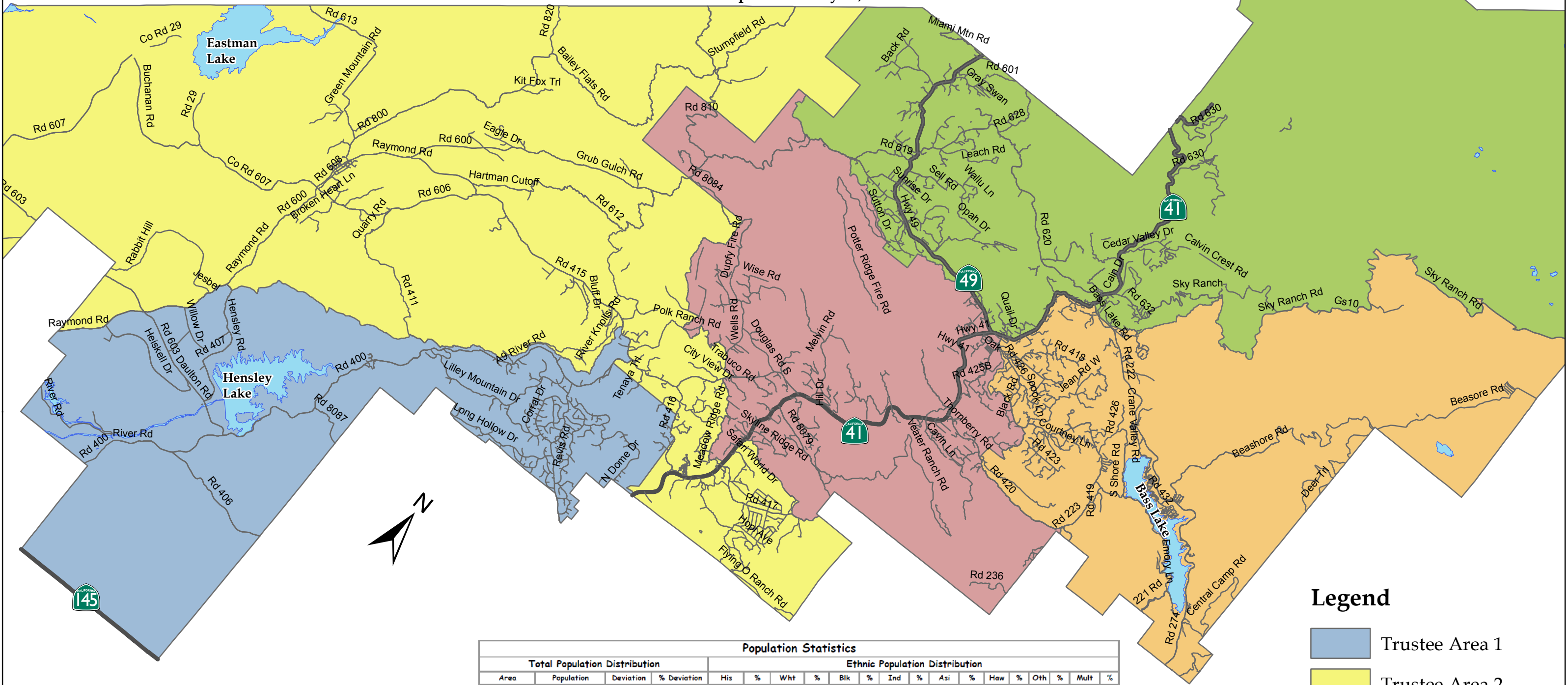


Yosemite Unified School District

Trustee Area Boundaries

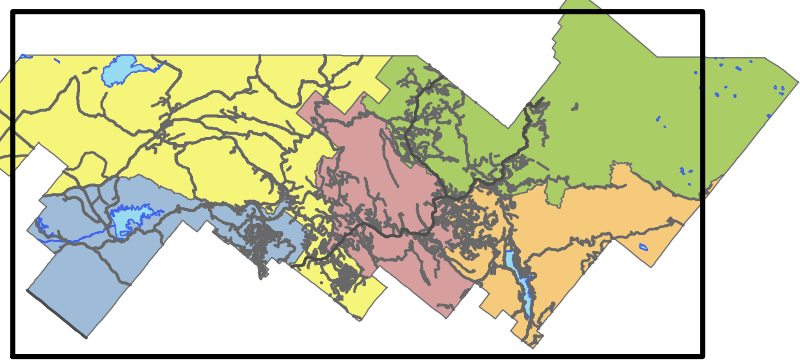
Adopted February 13, 2012



Legend

- Trustee Area 1
- Trustee Area 2
- Trustee Area 3
- Trustee Area 4
- Trustee Area 5

Extent shown on map



Population Statistics																			
Total Population Distribution				Ethnic Population Distribution															
Area	Population	Deviation	% Deviation	His	%	Wht	%	Blk	%	Ind	%	Asi	%	Haw	%	Oth	%	Mult	%
1	4,979	183	3.82%	561	11%	4,082	82%	43	1%	65	1%	43	1%	7	0%	5	0%	173	3%
2	4,632	-164	-3.42%	442	10%	3,762	81%	38	1%	193	4%	32	1%	2	0%	9	0%	154	3%
3	4,769	-27	-0.56%	523	11%	3,869	81%	18	0%	146	3%	63	1%	9	0%	8	0%	133	3%
4	4,694	-102	-2.12%	476	10%	3,931	84%	21	0%	80	2%	65	1%	2	0%	4	0%	115	2%
5	4,905	109	2.28%	365	7%	4,236	86%	13	0%	78	2%	36	1%	0	0%	0	0%	177	4%
	23,979			2,367	10%	19,880	83%	133	1%	562	2%	239	1%	20	0%	26	0%	752	3%
Age 18+ Ethnic Population Distribution																			
Most Populous Trustee Area		Area	His	%	Wht	%	Blk	%	Ind	%	Asi	%	Haw	%	Oth	%	Mult	%	
Least Populous Trustee Area		1	359	9%	3,258	85%	32	1%	49	1%	37	1%	7	0%	4	0%	107	3%	
Difference		2	296	8%	3,196	84%	30	1%	148	4%	25	1%	2	0%	7	0%	113	3%	
Ideal Trustee Area Population		3	345	9%	3,263	84%	15	0%	115	3%	48	1%	8	0%	5	0%	93	2%	
		4	317	8%	3,345	86%	17	0%	66	2%	52	1%	2	0%	3	0%	73	2%	
		5	238	6%	3,601	89%	12	0%	57	1%	29	1%	0	0%	0	0%	122	3%	
			1,555	8%	16,663	85%	106	1%	435	2%	191	1%	19	0%	19	0%	508	3%	

